

Manual

“Update Robot’s firmware”

Update Robot's firmware

1. Connect the robot to the PC via the USB cable



2. Start the Robot



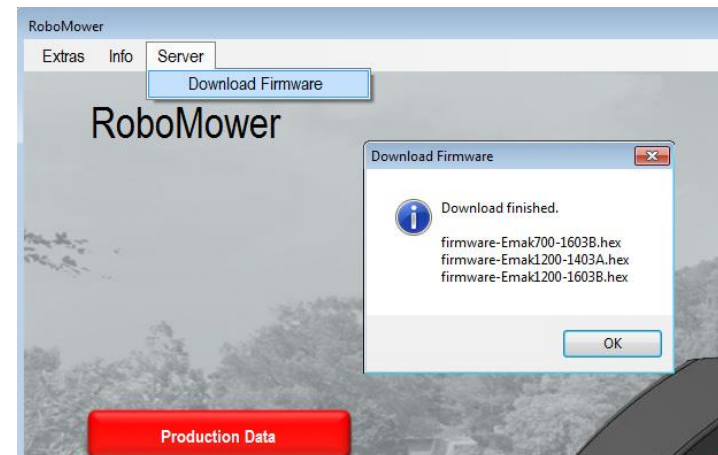
Update Robot's firmware

3. Double click on the Robot software icon on the desktop



Robot

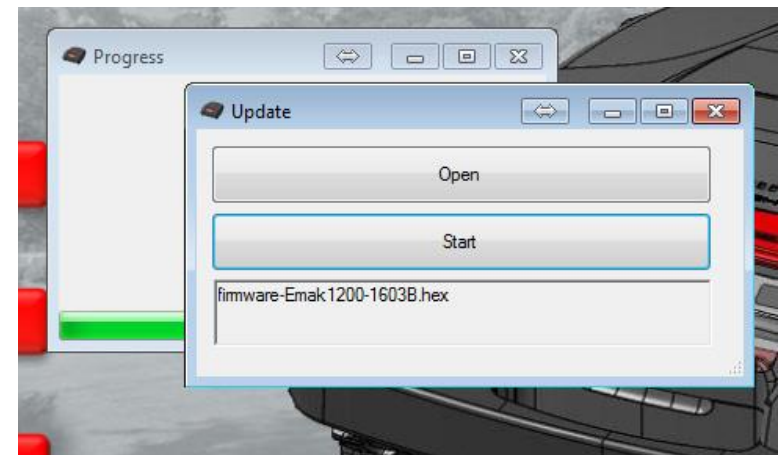
4. Click on "Server" and then on "Download firmware" to download the latest firmware updates



5. Click on "Update" to update the firmware installed on the machine

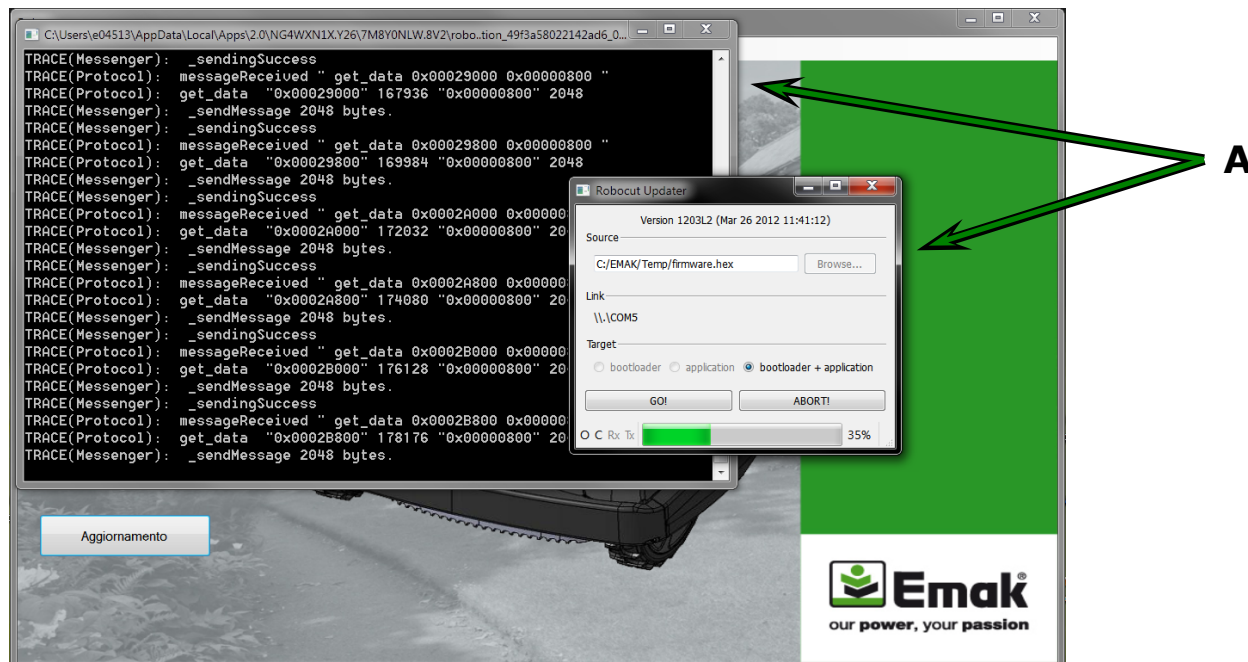
6. The software will check the firmware installed on the robotmower and propose the latest update downloaded

7. Click "start" to start installing the firmware. The procedure will be performed completely automatically. The progress bar must advance to 100% twice. Once completed, the software will automatically quit the operation



Update Robot's firmware

Warning !! During installation of firmware do not disconnect the computer or close the window (A). This will cause a malfunction of the Robot.



Update Robot's firmware

If:

- the Robot and computer become disconnected;
- loss of power or computer switches off during installing;
- accidental closure of the pop up window (A slide 6).

You need to:

1. disconnect the Robot;
2. remove the cover of the Robot;
3. disconnect and then re-connect the battery;
4. re-install the firmware, following the installation instruction;
5. re-calibrate the Robot as per the instructions in the "Robot software manual".