

“Robot software configuration”

Manual

Robot software configuration

1. Connect the robot to the PC via the USB cable

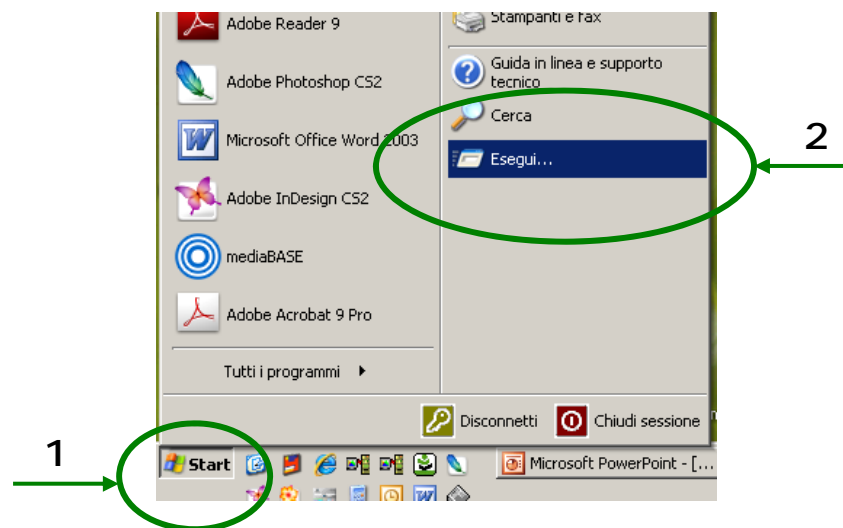


2. Start the Robot

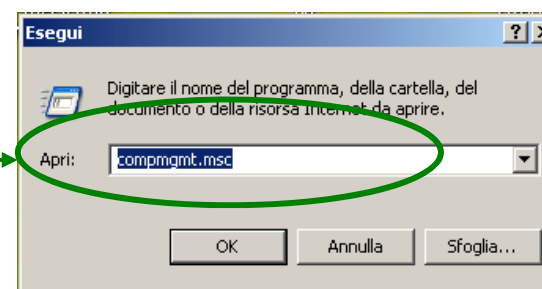


Robot software configuration

3. Verify communication (COM port) on your PC, click on Start (1), Run (2)



4. Type the command `compmgmt.msc` and click OK

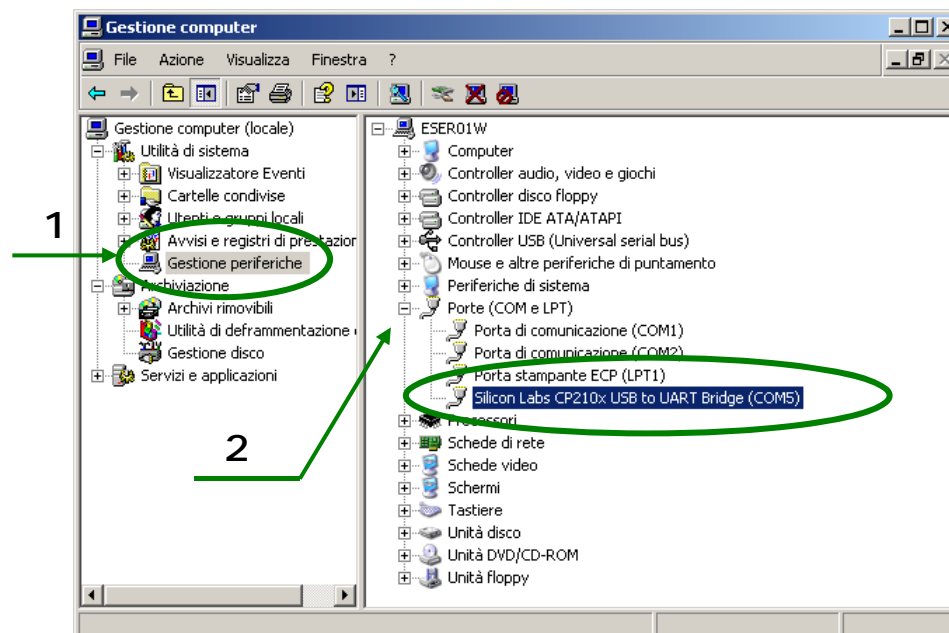


Robot software configuration

5. Click on Device Manager (1), open the submenu Ports (COM & LPT) by clicking on "+" (2)

6. Verify the COM port associated with the link:

"Silicon Labs CP210x USB to UART Bridge (COM...)"



7. Double click on the Robot software icon on the desktop



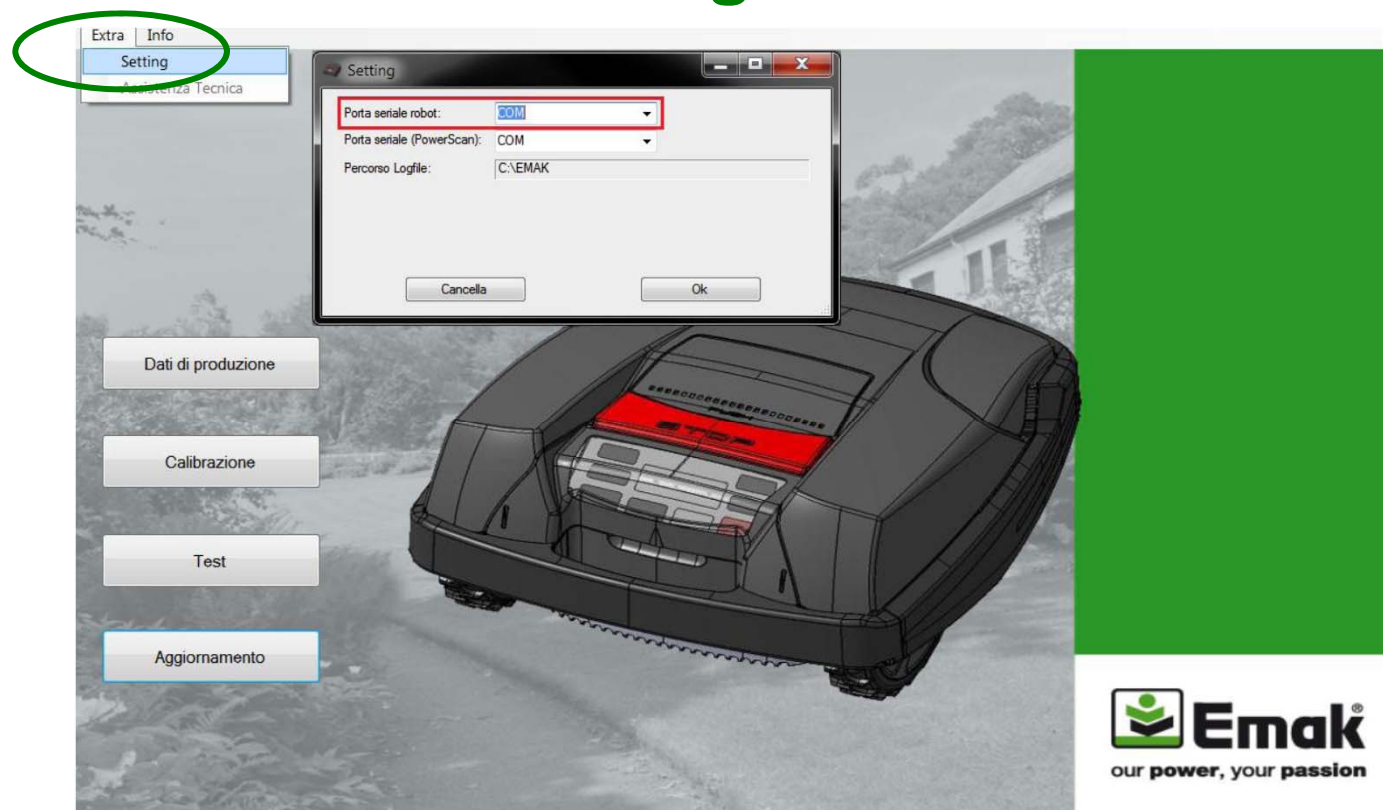
Robot

Robot software configuration

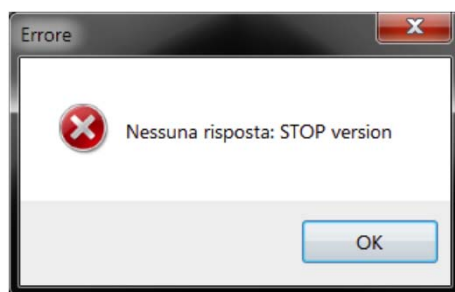
8. Click on the tab Extra, and then Setting. Choose from the menu the Robot serial port, specifying the one found in the device manager (step 6).

9. Choose from the menu the serial port (PowerScan) different from the Robot serial port.

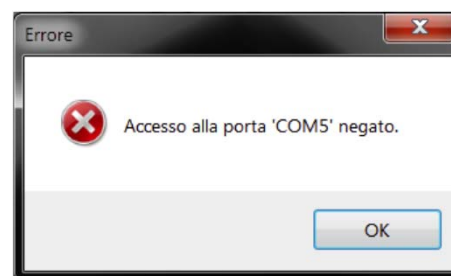
10. Click on OK to confirm.



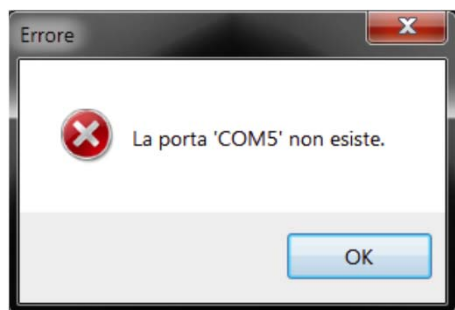
Software installation or configuration troubleshooting



Start the Robot
(point 2)



Check the serial port
(point 9)



Check the Robot
port (point 6 and 8)



Check the serial port
(point 6 and 9)